

# XAP<sup>®</sup>

## XAP TH2 Telephone Interface

**ClearOne.**

A telephone interface for ClearOne's industry-leading XAP professional conferencing systems. The XAP TH2 enables conference call functionality for XAP installations with its single telephone line connection. Up to 16 units can be linked for greatly expanded conferencing capability.



## THE CLEAR CHOICE FOR PROFESSIONAL AUDIO CONFERRING

### APPLICATIONS

Conference Rooms  
Boardrooms  
Courtrooms  
Distance Learning Facilities  
Convention Centers and Hotels  
Training Rooms  
Telemedicine Facilities  
Houses of Worship

### ADVANTAGES

#### Superior Audio Performance

- + Digital signal processing technology ensures crystal clear audio
- + Full-time echo cancellation eliminates telephone line echo
- + Automatic level control
- + Digital anti-alias filter minimizes hum and Central Office switching noise

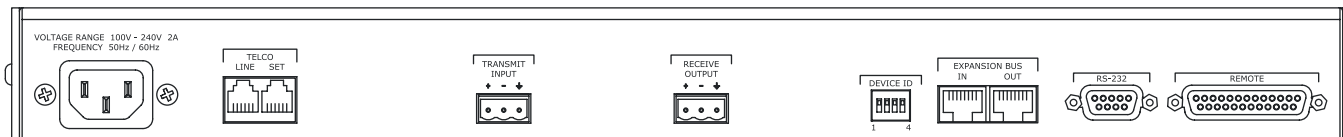
#### Configuration Flexibility & Scalability

- + Connects to ClearOne's XAP and PSR products through expansion bus port
- + Conference up to 16 callers in a XAP installation with multiple TH2 units
- + Configure through included G-Ware™ software, or through RS-232 port

#### Ease of Use & Control

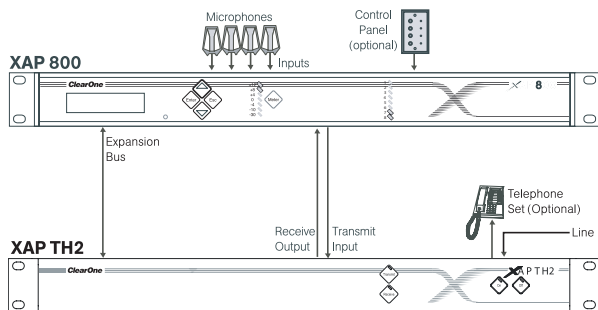
- + Speed dial stores 10 frequently dialed numbers
- + Incoming call ringing is heard through the loudspeaker
- + Selectable auto-answer and auto-disconnect
- + Users can dial telephone numbers, access voice mail, pagers, etc. without the use of a separate telephone device through integrated DTMF (touch-tone) dialing
- + Software-selectable country configurations

## > XAP TH2 BACK PANEL



## > INSTALLATION

### Typical Installation in XAP 800 System



## > SPECIFICATIONS



### Audio Performance

Conditions: Unless otherwise specified, all measurements are performed with a 22 Hz to 22 kHz BW limit (no weighting). Transmit limiter and Receive ALC disabled  
 Frequency Response: 250 Hz to 3.3 kHz  $\pm 1$  dB  
 THD+N: <0.2% re max level  
 SNR: >62 dB re max level

### Telco Line Echo Cancellation

Tail time: 31 ms  
 Null: 55 dB nominal

### Expansion Bus In/Out

Proprietary Network  
 RJ-45 (2), 115.2 kbps,  
 110 k $\Omega$  Impedance  
 Category five twisted-pair cable  
 80' (24 meters) maximum cable length between any two PSR1212s, XAP 800s or XAP 400s

### RS-232

DB-9 female  
 9,600/19,200/38,400 (default)/57,600 baud rate;  
 8 bits, 1 stop, no parity  
 Hardware flow control on (default)/off

### Control/Status

DB-25 female  
 Inputs: active low (pull to ground)  
 Outputs: open collector, 40 VDC max,  
 40 mA each  
 +5 VDC (300 mA over-current protected)

### Telco Line

RJ-11  
 POTS (plain old telephone service) or analog extension from a PBX  
 A-lead supervision provided

### Telco Set

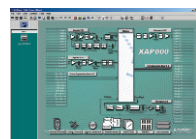
RJ-11  
 Connect analog telephone set  
 A-lead supervision provided

### Transmit Input

Push-on terminal block, balanced, bridging  
 Impedance: >10 k $\Omega$   
 Nominal Level: 0 dBu  
 Maximum Level: 15 dBu

### Receive Output

Push-on terminal block, balanced  
 Impedance: <50  $\Omega$   
 Nominal Level: 0 dBu  
 Maximum Level: 19 dBu



### Device ID

4-position DIP switch

### Set-up Software

G-Ware

### Power Input Range

Auto-adjusting  
 100-240 VAC; 50/60 Hz

### Power Consumption

15 W typical

### Approvals

FCC, CSA, IC, CE, NOM, ACA, SABS, JATE

### Dimensions (LxDxH)

17.25" x 10.25" x 1.75"  
 43.8 x 26 x 4.5 cm

## > CLEARONE LOCATIONS

**Headquarters:**  
 Salt Lake City, UT USA  
 1825 Research Way  
 Salt Lake City, UT 84119  
 Tel: 801-975-7200;  
 800-945-7730  
 Fax: 801-977-0087  
 sales@clearone.com

**Champlin, MN USA**  
 Tel: 763-974-3776  
 sales@clearone.com

**Latin America Offices**  
 Tel: 801-974-3621  
 global@clearone.com

**London, UK**  
 Tel: 801-974-3792  
 global@clearone.com

**Hong Kong**  
 Tel: 801-303-3441  
 global@clearone.com

**Singapore**  
 Tel: 801-303-3495  
 global@clearone.com